

SPEAK UP

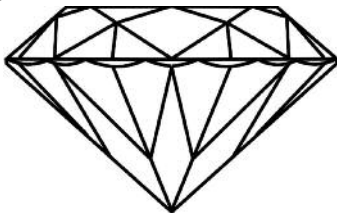


News from Manchester People First Issue 60 2014

Our new hate crime banner



Rose and Patricia with the design that became our new hate crime banner (see the last issue for details). We will be taking the banner with us when we have stalls at events.



It's Speak Up's
60th issue
Our Diamond
Anniversary!



See page 9 for our guest writer
Jim Battle, the Deputy Crime Commissioner

The Voice of the Learning Disabled





What we do

Manchester People First is run by and for learning disabled adults and is independent of all services.

We give training and support to learning disabled adults and professionals and we campaign for disabled people's rights.

Contact us

Manchester People First
3 Broughton Street
Cheetham Hill
Manchester
M8 8RF

Phone or Fax (0161) 839-3700
Email: mcrpeoplefirst@gmail.com
Website: www.manpf.org
Like us on Facebook
Follow us on Twitter: @firstmcr

Our directors

Edward Kane
Shirley Ryder

Staff

Stephen Hughes
Andy Needle
David Dunnico
Derek Owen
Barry Hills
Stephen Blake
Louise Crowley
Joanne Hickinbotham
Christopher Kenny

Opening Times

Monday to Friday 9:30 to 3:30pm
Drop-in Thursday 10 to 3pm



Manchester People First is a company limited by guarantee, registered in England and Wales, number 6339300. We are a registered charity, number 1124426.

Notice Board



Work Placement

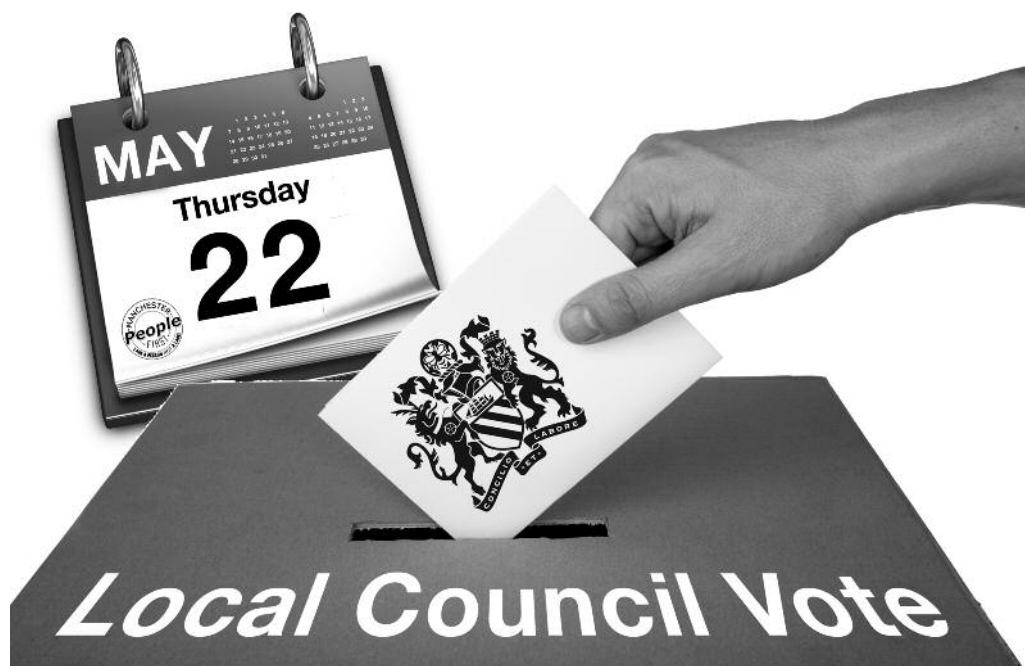
My name is James Barton. I am 15 years old and go to the Lancasterian School in Didsbury. I have been doing work experience with Manchester People First. I have met the Deputy Police Commissioner, been to the Greater Manchester Police Museum and had Fire Safety Training.

I live in Withington with my Mum and Dad. I like playing Dominoes with my friends and love going swimming. I have enjoyed my time with MPF a lot. Thank you to every one I met.

**Have your say
remember to vote!**

**It's the local council
elections on
Thursday 22 May**

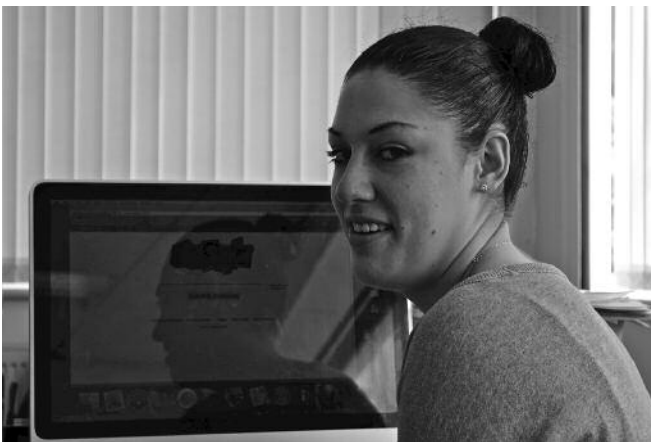
**You should have
your polling card
by now**





South Office Closes

We are sorry to say that our South office has had to close after its funding ended. We managed to keep it running for an extra year by carefully watching every penny we spent and moving to a cheaper office in Baguley.



We have had to say goodbye to Jodie Degan and wish her well in finding a new job. Barry Hills who was the Project Worker at the South has filled Nagina Dar's job working on the Service Audit Project. Nagina left to go on an education course. It is very sad when projects end, but we will do everything we can to make sure Manchester People First carries on helping adults with a learning disability speak up for themselves. If you lived on the South side of Manchester you are more than welcome to come over to our office in Cheetham Hill.



[www.youtube.com/
user/firstmcr](http://www.youtube.com/user/firstmcr)



Stay in touch follow us
on Twitter @firstmcr



Please 'Like' MPF
on FaceBook



Our web site:
www.manpf.org

.....
Our third annual talent show was great
fun for everyone – and everyone was a winner

We've got talent!



On Thursday 20 February we had our third annual talent contest, 'Manchester People First Got Talent'. Around 40 members and staff from MPF, OPAL and The Shaw Centre joined in.



There were 24 acts, so the judges had some very difficult decisions to make. Christopher Kenny thought the judges were good, Louise Crowley and Stephen Blake were really nervous before going on stage and Joanne Hickinbotham really wanted to win. But in the end Laura from The Shaw Centre came third as Shakin' Stevens singing 'Green Door'. Paul Brannick miming to Bette Midler's 'From a Distance' came second and our worthy winner was OPAL's team effort of 'The Lion Sleeps Tonight' and a poem by Gwyn.

A big thanks to our Judges who were very encouraging and kept even the losers amused.



Something a bit different this issue Take the Great Manchester Quiz!

How much do you know about your city?
Or for that matter your United?

1. What colour is the Manchester Terrier Dog?

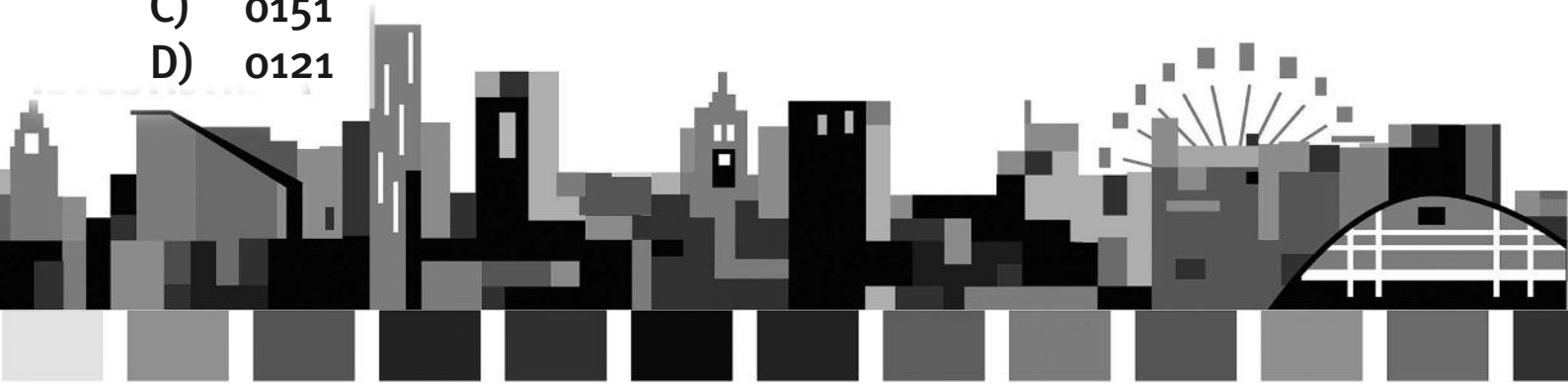
- A) Black and tan
- B) Black
- C) White
- D) Black and white

2. Which of the following pop groups is NOT from Manchester?

- A) M-People
- B) Simply Red
- C) The Farm
- D) New Order

3. What is the telephone dialling code for Manchester?

- A) 0161
- B) 0141
- C) 0151
- D) 0121



4. Which member of the sprint relay team which won the 4 x 100m Gold for Great Britain at the 2004 Olympics is from Manchester?

- A) Jason Gardner
- B) Darren Campbell
- C) Marlon Devonish
- D) Mark Lewis – Francis

5. In which square is the Manchester Town Hall?

- A) St. Peters Square
- B) Albert Square
- C) Trafford Square
- D) Marlborough Square

6. People say it rains more in Manchester than most other cities in England. But does it?

- A) True
- B) False

7. Which would you be likely to see in a Manchester Chippy?

- A) Chiko roll
- B) Chip barm
- C) Spring rolls
- D) Bhaji



Drama Group Perform



The Expressive Edge Theatre group in Chorlton have held their third performance. This one was called Day Trippers, and was about different day trips the group remembered going on. Old members were joined by new members including several new people from Oakdene.

One scene was where Melisa remembered going to see the sea lions at Blackpool Zoo. Malcolm remembers being on Hollinsworth Lake as a boy. Shirley said she thought it was really interesting seeing other people acting out rowing the boat.

The group dressed as if they were going on a day trip, in various Bermuda shirts and shorts, sun hats and shades. Joseph said, “It was good, I enjoyed the show, and I really liked the costumes”.

Melissa “loved going out on on day trips, and this was a fun play”.

Laura Draper who was in a memorable scene, where she attempted several times to dip her toes in the sea, commented, “I liked it because I was good at it. It was about things I like to do”.

Another experience in one of the scenes was of people getting lost. Nicky said about another scene, “It was fun, I enjoyed doing the scene when Charlene was lost”. Charlene added, “I enjoyed concentrating and getting the words right”. This was the first time she had worked with the group.



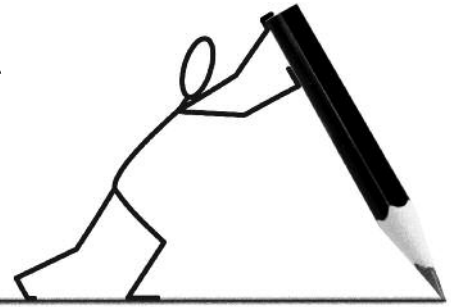
The theatre company all worked very hard on this performance having less time to practice, then previous performances, performing the play twice at 1.30pm and 6.00pm.

Alan and Paul finished by playing the mouth organ.



Guest writer

**Jim Battle Deputy
Police Commissioner**



Tells us why he thinks disability hate crime is important

No one should suffer Hate Crime and we are working really hard to end ALL Hate Crimes in Manchester. We are working very closely with Manchester City Council and a number of organisations such as Manchester People First to understand how Hate Crime affects people with learning disabilities. This is really important because we need people out there who are victims of Hate Crime to report it. A big part of this is knowing where and how you can report it. Reporting it helps the Police understand what is going on in the community.

What is a Police and Crime Commissioner?

We have had a Police and Crime Commissioner in Greater Manchester for 2 years. He is Tony Lloyd and I'm his Deputy. It's our job to be a bridge between the Police and the public. We look at crimes such as Hate Crime, and domestic violence and have a plan on how we can reduce them, so all our community will be safer.

In Manchester we are taking steps to end Hate Crime by working in schools with pupils, because we think it is really important that people from a very early age understand the nature of disabilities. It is important for all people to integrate with everyone else so we can all understand each other's differences rather than focus on them. It's also about respect for yourself and each other. No one with a disability should suffer a Hate Crime towards him or her. If you have been a victim of a Hate Crime you can report it by calling 101 or speaking with someone from MPF on 0161 839 3700, but in an emergency you should always ring 999.



North West Self-advocates Conference Blackpool

In February Stephen Burden, went to the North West Self Advocates Conference in Blackpool on behalf of Manchester People First. He stayed at the Imperial Hotel right on Blackpool sea front.

Stephen listened to speakers. And spoke twice at a workshop about looking after your eyes. Stephen is blind so he was able to tell people about how this impacts his daily life.

Stephen also went to a talk about families, which he said was interesting.

As always there was entertainment in the evening, with a quiz and comedian on one night, and on the second night was the annual gala dinner Stephen Burden said, “The conference was good, and it was great to meet other people”. He caught up with a lot of old friends and made some new ones, from the 150 delegates attending the conference.



nwt dt



Pathways
Associates

Community Interest Company

TRAINING & DEVELOPMENT

Safeguarding Audits

Our Service Audit Assistants have started a new series of important inspections. They have been asked by Nigel Hunt who is the head of Safeguarding in Manchester to visit people who get services and ask them what they know about safeguarding. Safeguarding is a way of protecting vulnerable people from abuse, including physical, verbal, sexual and financial abuse. We will be finding out if people have been told about it, and have any ideas how it can be made better. We will be making sure support staff have been trained and if service providers have policies to protect people. The actual reports will be private, but we will be telling the Safeguarding Board what we found.



I am a person
Not a label

Student research project

Can a label ever be a good thing?



Ruth McNeill is a student at the University of Manchester she is in the third year of a degree in Learning Disability studies.

I recently visited Manchester People First to search for volunteers to take part in my research project. I am trying to investigate ‘Can labelling have a positive impact on individuals?’ The research is part of my dissertation and will go towards my degree, which I finish in May.

The course has taught me about the social model and how society disables people, it has also taught me about person centred plans and the history of disabled people, plus much more.

I am hoping to use my degree to educate people about the social model once I finish.

I gave a short presentation to the members of People First where I told them about my research. I was overwhelmed with the quick response from individuals wanting to take part, but due to the project size I can only interview 5 people in total. This is a shame as I would like to hear more views, but my time is restricted. The interviews will take place in March and I am looking forward to hearing what the individuals say.

NHS Info sharing

There are important changes to the way the National Health Service shares information about you with other people.

Come and find out about these changes and other things that may effect you.

You have a choice about these changes, so get the facts you need to make up your mind.

We are putting on this information day with **healthwatch** Manchester who make sure the NHS in our area give good quality care to all of us.

Tuesday 10 June 2014
11am to 2pm Free Lunch

Manchester People First
3 Broughton Street, Cheetham Hill, M8 8RF
0161 839 3700

